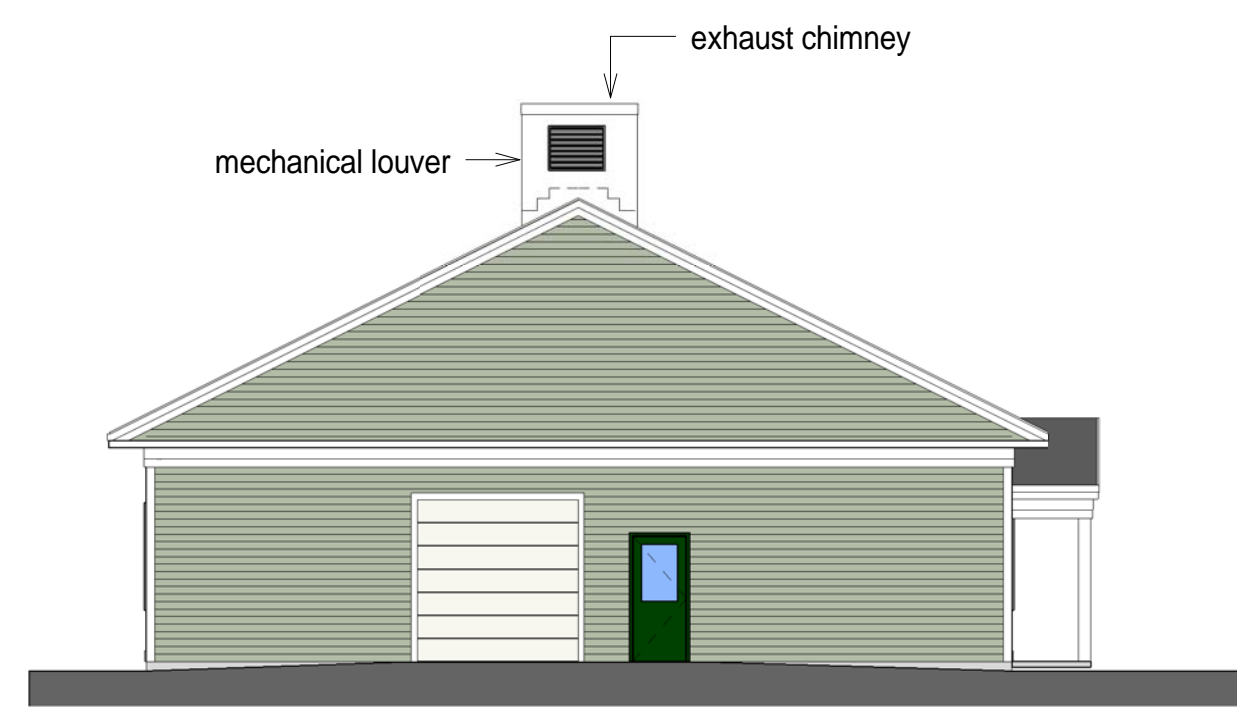
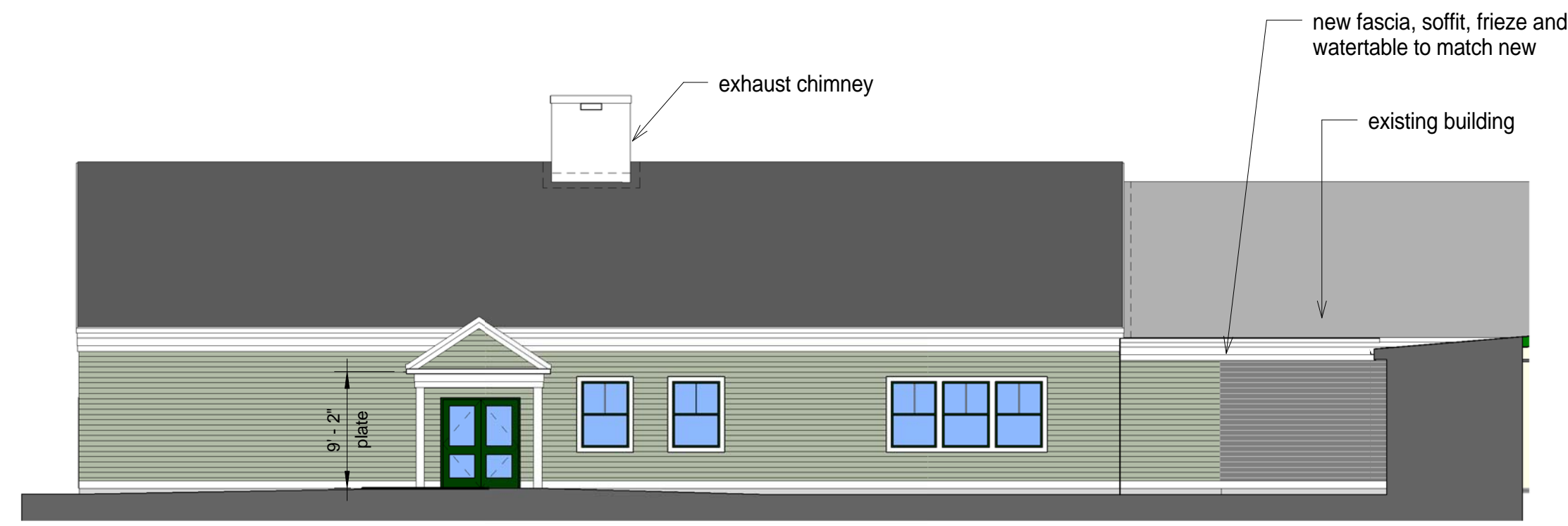


3 Rear Elevation  
3/32" = 1'-0"

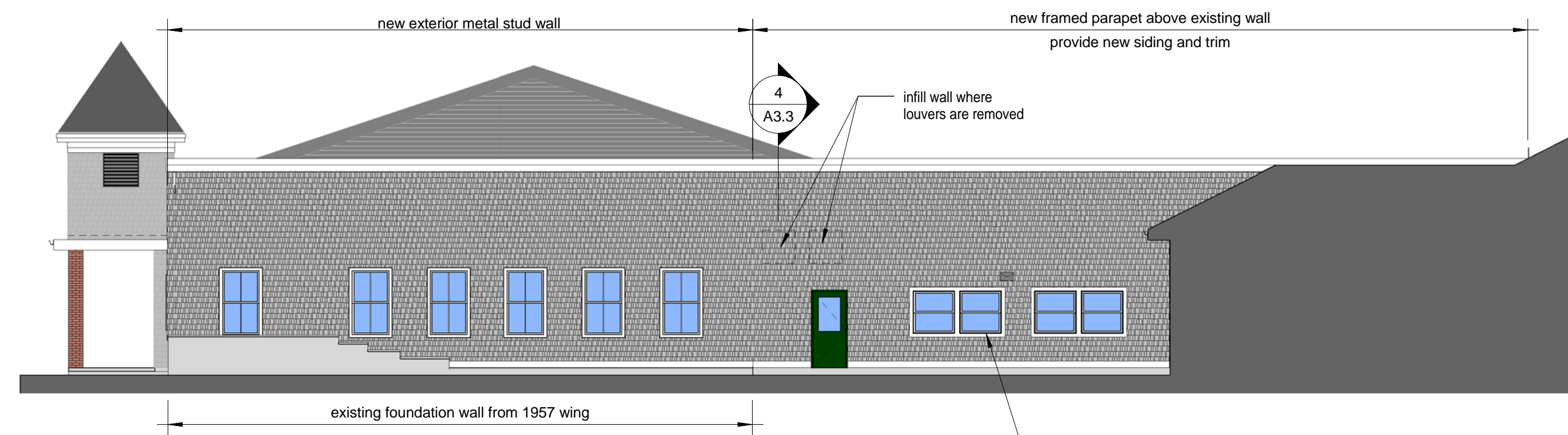


4 Left Side Elevation  
3/32" = 1'-0"

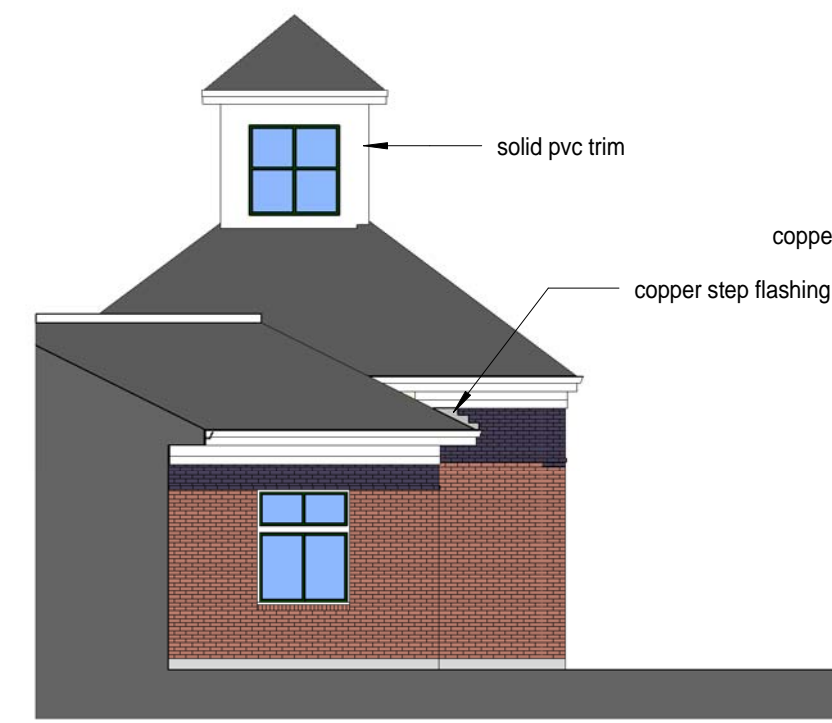


5 Courtyard Elevation  
3/32" = 1'-0"

Note:  
All roof penetrations to be through exhaust chimneys  
with louvers on back or sides of chimney, as shown  
on Mechanical plan



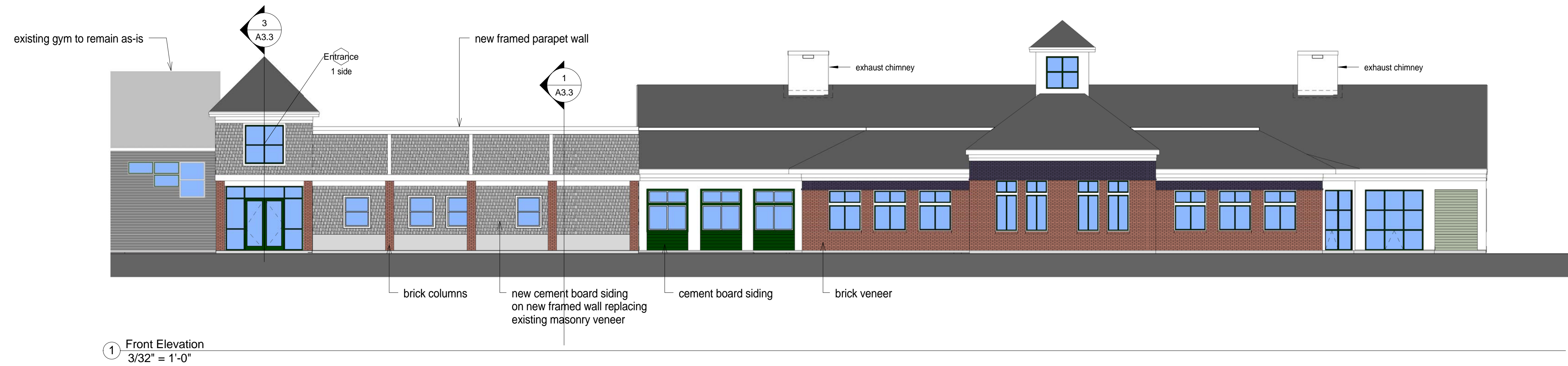
6 Partial Right Side Elevation  
3/32" = 1'-0"



7 Partial Outdoor Classroom Elevation  
3/32" = 1'-0"



2 Right Side Elevation  
3/32" = 1'-0"



1 Front Elevation  
3/32" = 1'-0"

This document was prepared by Stewart Architects LLC and may not be used, reproduced, disseminated, or transmitted in any form or by any means, electronic or mechanical, without the express written permission of Stewart Architects LLC

**StewartAssociates ARCHITECTS**  
PO Box 6555  
Laconia, NH 03247  
Phone: (603)524-3000  
Fax: 527-0700  
info@stewartarchitects.com  
Copyright SAA, 2015  
www.stewartarchitects.com

Russell Elementary School Capital  
Improvement Plan  
Rumney NH  
Project number: 2012.148

Exterior Elevations

Scale: 3/32" = 1'-0"  
Date: October 1, 2015  
Revisions: